

# Rainier, Explorer Lite, Large Expedition Tank Bag for BMW R80, R100, R1100, R1150, R1200GS

## Installation:

- Figure 1:** This is a properly mounted Rainier Tank Bag on the BMW R1200GS.
- Make sure your tank and the bottom of the bag are free of dirt. We recommend that you wash and wax your tank prior to putting soft luggage on. Always clean surfaces prior to each use.
- Remove the seat.
- Figure 2:** On right side of bike remove plastic air box snorkel cover prior to installation. Unfasten the two rear straps (the rear is the handle side of the bag with the buckles underneath) from the two buckles and webbing keeper. Take the rear straps of the webbing and feed them around each frame tube on either side of the air box and back through the rectangular loop buckle. Pass web through the horizontal keeper and the male buckles.
- Replace seat, making sure the buckles and web are sticking out.
- Figure 3:** Unfasten the two front straps from the two buckles and webbing keeper. Loop each around the gas tank mounting post and back through the small plastic loop. (The gas tank mounting posts are located on either side of the front shock absorber.) Make sure not to pinch any hoses or wires!
- Figure 4:** Even the webbing ends out at the top of the tank. Feed them through the webbing keeper and back through the buckles.
- Place the bag on the tank and fasten all the buckles. Center the bag by tightening the rear straps and then the front straps. Place the front and rear straps back through the webbing keeper; this will keep the ends from flapping around.
- Cut off any extra webbing leaving enough tail to tighten the straps (about 6" on the front and about 4" in rear).
- To gas up, unclip front two straps and tilt the tank bag onto the seat. Fuel. Re-clip and tighten. Enjoy!



Figure 1

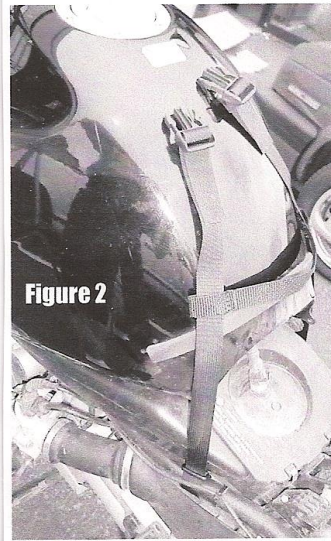


Figure 2

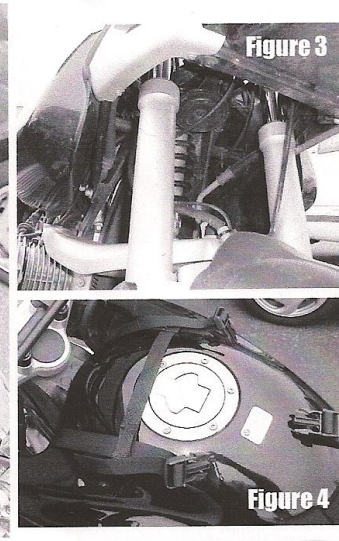


Figure 3

Figure 4

**Thank You for purchasing our high quality soft luggage.  
We hope it makes your time in the saddle more enjoyable.  
For technical support call 1-800-535-8131**

**www.wolfmanluggage.com**