

Mounting Instructions for Pelican 1430 Cases to Wolfman and Backroads Moto Racks

THESE INSTRUCTIONS ARE FOR MOUNTING PELICAN 1430 CASE ONLY

This is a "Do It Yourself Kit"

Read and understand these instructions thoroughly prior to installation!

This kit contains the following: (This kit is shared with our Standard Hard Bag mounting kit, not all parts will be used; as indicated.)

Quantity	Description
4	Puck
4	Arm
2	Rails
2	Spacer A 2" x 1/8" x 5" (included in pelican 1430 mount kit only)
4	Spacer B 1 1/4" x 1/8" x 8.75" (included in pelican 1430 mount kit only)
4	Set Screws 1/4" x 20 x 1/4"
4	Star knob
4	Bolt, Button 8mm x 1.25 x 25mm
4	Bolt, Button 6mm x 1 x 20mm
12	Washer, 8mm (large)
4	Washer, 8mm (small)
8	Washer, 6mm (large)
4	Nut, 6mm
4	Nut, 8mm
1	Mount Template

Tools needed

BLUE or a Medium Strength Loctite or thread locker

Silicone sealant

5mm Hex Wrench

4mm Hex Wrench

3mm or 1/8" Hex Wrench

13mm Box End Wrench or Socket

10mm Box End Wrench or Socket

Drill

5/16" Drill Bit

1/4" Drill Bit

1/8" Drill Bit

Tape measure

Center punch

Hammer

Marker

Assemble Arm and Puck

1. Install a puck over bolt on arm and start a 1/4" x 20 x 1/4" set screw in puck, repeat for all four. DO NOT TIGHTEN SET SCREW AT THIS TIME. FIG 1

FIG 1



FIG 2



Drill and Mount Hardware on to Cases

2. Find and mark a vertical center line on the Front or Latch side of your Pelican 1430. SEE FIG 2
3. Align drill template with bottom of box and vertical center line and tape in place. FIG 3
4. Use center punch and hammer to mark the four holes. FIG 4

FIG 3

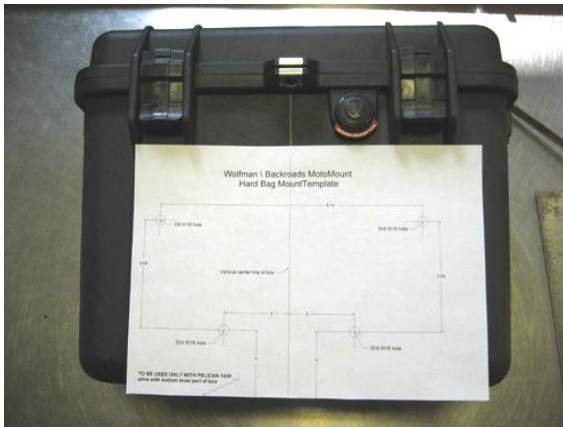
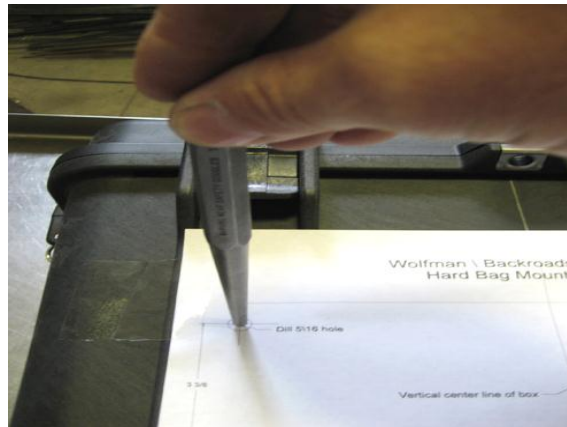


FIG 4



5. **Before** drilling check to make sure puck holes are centered in between each of the two the vertical ribs.
FIG 5

FIG 5



FIG 6



6. Drill all four holes with 1/8" drill bit first and re-drill with the 5/16" bit. FIG 6
7. Place two 8mm x 1.25 x 25mm button head bolts with one large washer on each, through the case from inside out. FIG 7

FIG 7

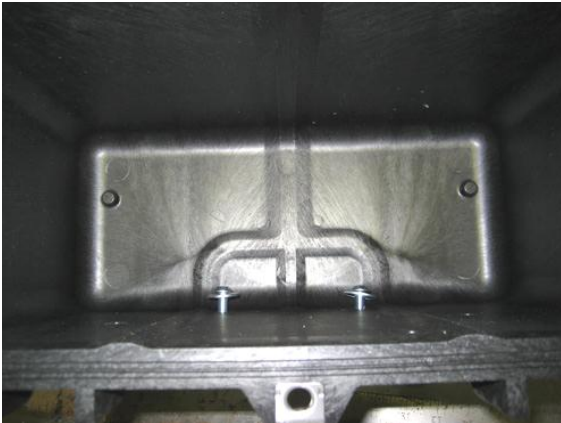
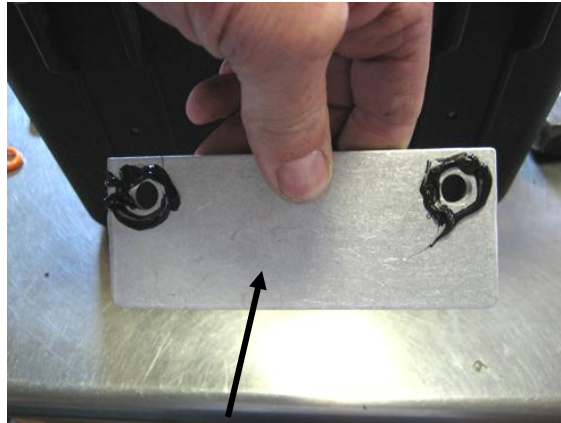


FIG 8



Spacer A

8. On Spacer A apply a small amount of silicone around the two holes, (The Holes in Spacer A should be at the top.) and slide over bolts with silicone facing the case. FIG 8
9. Install rail, 8mm large washer and 8mm lock nut over Spacer A. Tighten snug. FIG 9
10. On each Spacer B apply a small amount of silicone around the two holes .
11. Align the 5/16" hole in Spacer B with 5/16" hole in the case, between the vertical ribs. Orient Spacer B with the 1/4" hole at the top. FIG 9
12. Install puck arm assembly through 5/16 hole, thread on knob with one large 8mm washer on from inside on each. FIG 9 & FIG 10

FIG 9 1/4" Hole Puck Arm Assembly

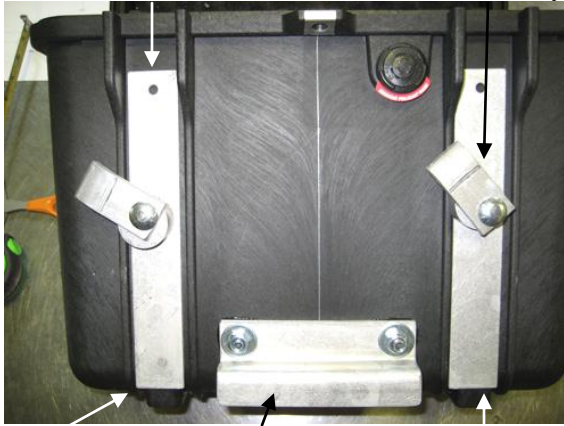
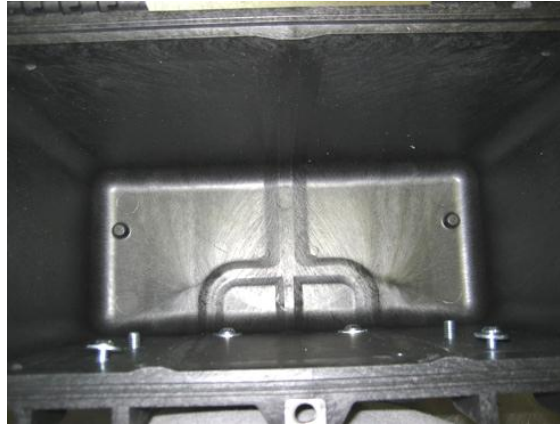


FIG 10



13. Using Spacer B as a template. Drill a 1/4" hole in case. Install one 6mm x 1 x 20mm button head bolt with washer from inside out. Thread on nut with washer from outside of case. Repeat for side. Tighten Snug. FIG 10

Adjusting the Pucks and Arms to the Side Rack Hoops.

- 14. Place case on the side rack, with the Rail over the Lower portion of the Hoop.
- 15. Turn arms to catch rack and lightly tighten inside knobs.
- 16. Turn pucks with your fingers until the pucks just touch the inside of rack Hoop. FIG 11
- 17. Mark arm and puck with marker, remove both puck arm assembly's align your marks on the arm and puck and tighten set screw. FIG 12

** (It is best to have the puck cam in from the top, in some cases this is not possible and You will need to have them cam up from the bottom.)**

FIG 11

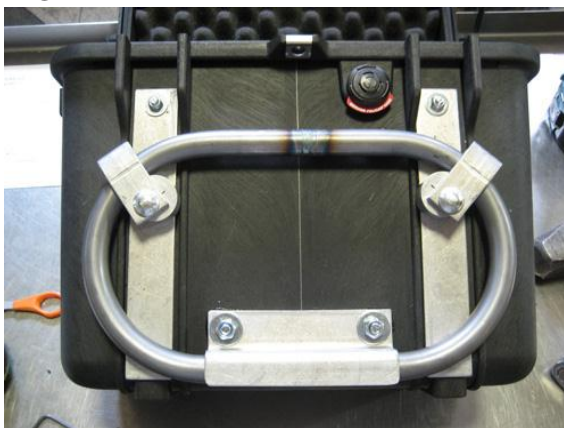


FIG 12



If you have any questions call or email Berg Briggs at:
1-307-690-0452
berg@brmoto.com