

Mounting Instructions for Mounting 2010 Wolfman and Backroads Moto Side Racks

Suzuki DRZ 400 S & DRZ 400 SM

This kit contains the following:

Quantity	Description
1	Left rack
1	Right rack
5	8mmx25mm Bolts (hex head)
2	8mm nuts
7	8mm washers (small)

Tools needed

1-12mm Socket

1-13mm Socket

1 13mm Box End Wrench

BLUE or a Medium Strength Locktight or thread locker

These Racks are intended to be used only with the Wolfman Expedition Dry Saddlebags and Teton Saddlebags.

Read and understand these instructions before touching your bike, rack or a wrench.

Apply Medium Locktight or thread locker to All Bolts

Right side rack -Mounted



1. Remove the top 12mm hex head bolt on the Right passenger peg bracket. Figure-2
Figure-2



12mm Hex Head Bolt

Passenger Peg Bracket

2. Mount upper rack mount to the frame tab under the fender. Figure 3 Use one 13mm hex head 8mmx25mm Bolt and washer. Thread bolt through rack hole and tab. On the back side use a washer and the Nut. Do not tighten at this time.

Figure-3



8mm x 25mm Bolt, washer, bike frame, washer, nut

2. Install one 13mm hex head 8mmx25mm bolt and washer in lower mount. Figure-4
Figure-4



8mm x 25mm Bolt washer

3. Tighten all Bolts and Nuts on the Right Side.

Be careful not to over tighten the lower bolts as they are threaded into Aluminum.

Left side rack-Mounted

Figure-5



4. Remove both 12mm hex head bolt on the Left passenger peg bracket. Figure-6

Figure-6



Left Passenger Peg Bracket

3. Mount upper rack mount to the frame tab under the fender. Figure-7 Use one hex head 8mmx25mm Bolt and washer. Thread bolt through rack hole and tab. On the back side use a washer and the Nut. Do not tighten at this time.

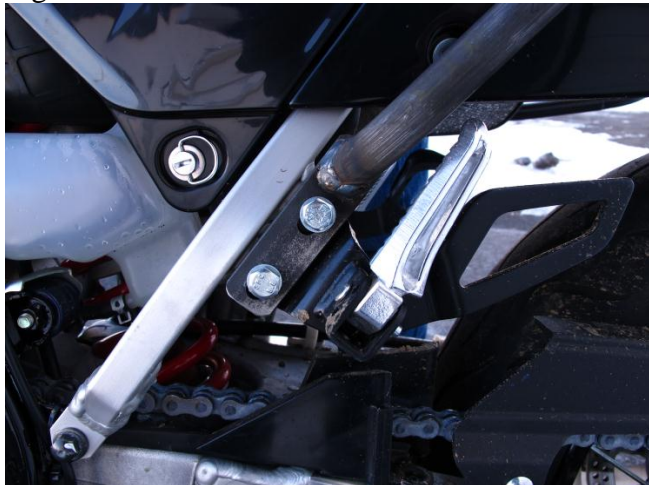
Figure-7



8mm x 25mm Bolt, washer, bike frame, washer, nut

4. Install two hex head 8mmx25mm bolt and washer in lower mount. Figure-8

Figure-8



5. Tighten all Bolts and Nuts on Left side.

Be careful not to over tighten the lower bolts as they are threaded into Aluminum.

If you have any questions call or email Berg Briggs at Backroads Moto:

1-307-690-0452

berg@brmoto.com