

Mounting Instructions for mounting 2010 Wolfman and Backroads Moto Side Racks

KTM 950 SE

This kit contains the following:

Quantity	Description
1	Left rack
1	Right rack
4	8mmx30mm Flat head
4	8mmx25mm Socket head (for use with out passenger pegs)
4	8mm washers (small)
2	$\frac{3}{4}$ x 1.200 spacers

Luggage racks must be installed with a top luggage plate or damage to subframe will result

Tools needed

BLUE or a Medium Strength Lock tight or thread locker
5mm Hex wrench
6mm Hex wrench
Philips screw driver
6mm socket or end wrench

These Racks are intended to be used only with the Wolfman Expedition Dry Saddlebags and Teton Saddlebags.

Read and understand these instructions before touching your bike, rack or a wrench

Be Sure To Lock tight All Bolt's

1. Remove passenger pegs and upper grab handles. (Grab handles will not be reused)
2. Remove 4 rubber grommets were the grab handles were mounted. **See Fig 1.**



3. Check to see if the threaded hole is centered in rear plastic. (if so move to step 5)
4. Loosen screws that hold rear plastic and align 4 mounting holes, retighten screws if rear plastic can not be moved enough trim plastic around the 4 mounting holes.

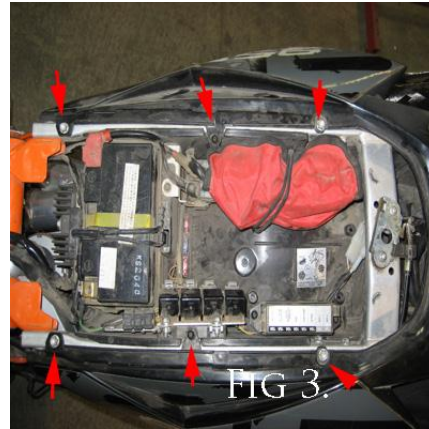
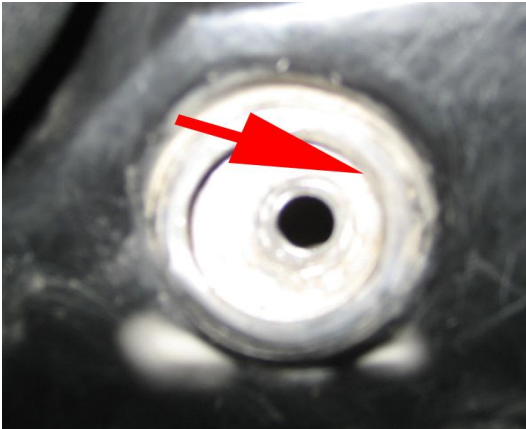
See Fig 2.

OR

Slot the 6 holes for the screws that hold on the rear plastic. **See Fig 3.**

Fig 2

Fig 3



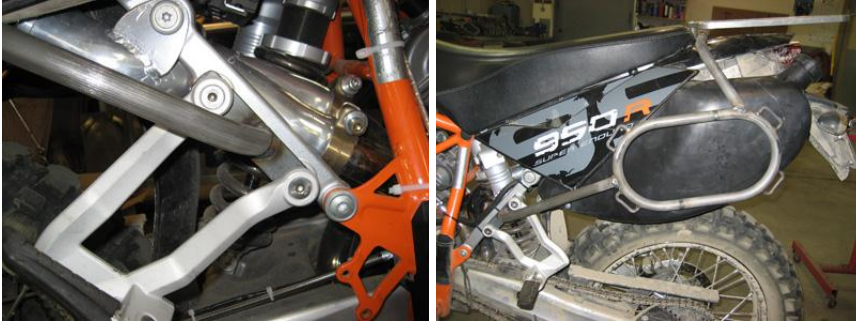
5. Place two 3/4 x 1.200 spacers in the back upper mount mounting holes.
6. Place top luggage rack on top of the back two spacers and start back two bolts (supplied with top luggage rack) leave loose at this time.

Right side rack

1. Slid right hand rack in under top luggage plate apply lock tight to top bolt and start bolt (supplied with top luggage plate)
2. If using passenger pegs install two 8mmx30mm flat head bolts with lock tight through passenger peg and thought luggage rack, thread into subframe.
3. If not using passenger pegs install two 8mmx25mm with lock tight and a washer in lower rack mount
4. Do not tighten bolts at this time

Left side rack

1. Slid left hand rack in under top luggage plate apply lock tight to top bolt and start bolt (supplied with top luggage plate)
2. If using passenger pegs install two 8mmx30 flat head bolts with lock tight through passenger peg and through luggage rack, thread into subframe.
3. If not using passenger pegs install two 8mmx25mm with lock tight and a washer in lower rack mount
4. Tighten all mounting bolts



If you have any questions call or email Berg Briggs at:
1-307-690-0452
berg@brmoto.com