

Mounting Instructions for Wolfman and Backroads Moto Side Racks

04-Present BMW R1200GS & 07 Present BMW R1200 GS ADVENTURE

Read and understand these instructions prior to installation!

This kit contains the following:

Quantity	Description
1	Left rack
1	Right rack
2	25mm Plastic Clamp
2	18mm Plastic Clamp
2	5mm Washer (Large)
16	6mm Washer (Small)
1	6mm Washer (Large)
4	8mm Washer (Small)
8	6mm Lock Nut
4	8mm Lock Nut
2	5mm x .80 x 20mm Bolt
1	6mm x 1 x 25mm Socket Head Bolt
8	6mm x 1 x 50mm Socket Head Bolt
4	8mm x 1.25 x 20mm Button Head Bolt
2	1" x 1 5/8" Backing Plate
2	1" x 2" Backing Plate
1	Under Fender Mount Bar
1	Turn Signal Relocation Bracket
1	Cross Brace

Tools needed

Medium Strength Loctite (Blue) or equivalent thread locker

5mm Hex Wrench

T25 Torx Wrench

13mm Box End Wrench or Socket

10mm Box End Wrench or Socket

These Racks are intended to be used only with the Wolfman Expedition Dry Saddlebags, Teton Saddlebags and our Hard Bag mounting Kit.

Read and understand these instructions prior to installation!

Be Sure To Loctite All Bolt's

Correctly Mounted Side Racks and Rear Cross Brace on a BMW R1200GS.

Left Side



Right Side



****The rear turn signals are required to be relocated to the license plate bracket for proper side rack installation****

1. Remove the three T25 Torx Bolts that mount rear fender assembly to bike. FIG 1 (Arrow Points)
2. Disassemble right and left rear turn signals. Remove lens cover and bulb. Disconnect wires from bulb housing, remove Turn Signals from bike. FIG 2

FIG 1



FIG 2

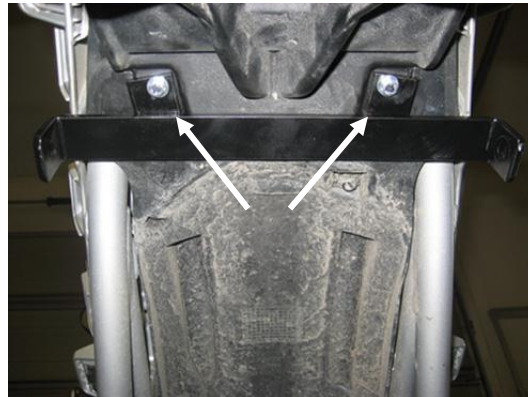


3. Clip the zip tie that holds turn signal wires inside rear fender housing (BE Careful not to clip the turn signal wires), feed turn signal wires out next to brake light. FIG 3

FIG 3



FIG 4



4. Reinstall rear fender housing; first reinstall the center T25 torx bolt. Using Two 5mm x .80 x 20 mm Bolts with Two 5mm Large Washers, install the Under Fender Mount Bar to the front two mounting points. FIG 4

Right Side Rack

5. Place one 8mm x 1.25 x 20mm Button head bolt through top rear mount and through Under Fender Mount Bar Side Flange, Thread one 8mm lock nut with washer. DO NOT TIGHTEN AT THIS TIME. FIG 5 (Arrow Point)

FIG 5



FIG 6



6. Place one 25mm plastic clamp around frame at the upper front mounting flange on rack. Install two 6mm x 1 x 50mm button head bolts with washer, install one 1" x 2" backing plate 2 washers and 2 lock nuts to back side. DO NOT TIGHTEN AT THIS TIME. FIG 6

7. Place one 18mm plastic clamp around passenger peg tube at the lower front mounting flange on rack. Install Two 6mm x 1 x 50mm socket head bolts with washer, install one 1" x 1 5/8 backing plate 2 washers and 2 lock nuts to back side. DO NOT TIGHTEN AT THIS TIME. FIG 7

8. Under Side View. FIG 8

FIG 7

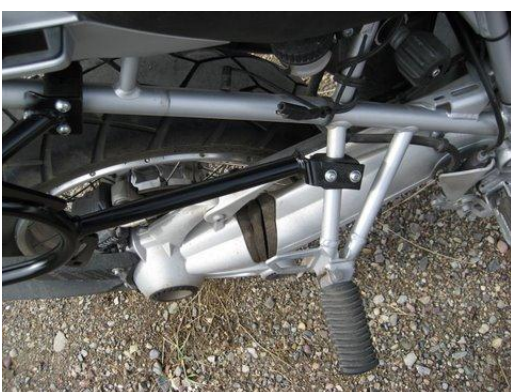


FIG 8



Left Side Rack

- Place one 8mm x 1.25 x 20mm button head bolt through Under Fender Mount Bar Side Flange, thread one 8mm lock nut with washer on. DO NOT TIGHTEN AT THIS TIME. FIG 9 (Arrow Point)

FIG 9



FIG 10



- Place one 25mm plastic clamp around frame at the upper front mounting flange on rack. Install two 6mm x 1 x 50mm socket head bolts with washer, install one 1" x 2" backing plate 2 washers and 2 lock nuts to back side. DO NOT TIGHTEN AT THIS TIME. FIG 10

- Place one 18mm plastic clamp around passenger peg tube at the lower front mounting flange on rack. Install two 6mm x 1 x 50mm socket head bolts with washer, install one 1" x 1 5/8 backing plate 2 washers and 2 lock nuts to back side. DO NOT TIGHTEN AT THIS TIME. FIG 11

- Under Side View FIG 12

FIG 11



FIG 12



Cross Brace

- Install one 6mm x 1 x 25mm socket head bolt with 6mm Large washer in top center mounting flange on Cross Brace. (Be sure to reuse factory spacer) DO NOT TIGHTEN AT THIS TIME. FIG 13 (Arrow Point)

- Install one 8mm x 1.25 x 20mm button head bolt (no washer) through rack and cross bar flange, thread on One 8mm lock nut and washer. Repeat for other side. FIG 14

FIG 13

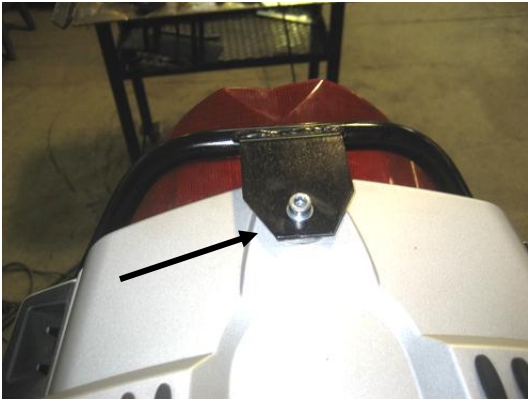


FIG14



15. **Now that the racks are on the R1200GS. The Bolt Tightening sequence:**
 Start with the Cross Brace and work forward, next the Under Fender Mount Side Flange, next the Upper Rack Flange on the Motorcycle Frame, last the Lower Rack Flange on the Passenger Peg Bracket. Repeat For other side.

Turn Signal Relocation Bracket

16. Install turn signals on the turn signal relocation bracket. FIG 15
 FIG 15



17. Reinsert and reconnect the turn signal wires, the bulb housing and bulb.
 18. Using the existing license plate mounting hardware, using the top license plate holes on bike mount license plate relocation bracket under license plate. FIG 16

FIG 16



****Periodically Re-check all Nuts and Bolts to make sure they are tight, and the Side Racks are not loose****

If you have any questions call or email Berg Briggs at:
 1-307-690-0452
 berg@brmoto.com